

**MAXIMUM MDA-110**  
Item no. 18751



# MAXIMUM MDA-110

<b>English</b>	<b>User manual</b>
<b>Deutsch</b>	<b>Gebrauchsanleitung</b>
<b>Français</b>	<b>Manuel d'utilisation</b>
<b>Español</b>	<b>Manual de instrucciones</b>
<b>Italiano</b>	<b>Istruzioni per l'uso</b>
<b>Dansk</b>	<b>Brugervejledning</b>
<b>Svenska</b>	<b>Användarhandbok</b>

# Certificate of Compliance

EET Group A/S  
Bregnerødvej 133 D  
DK-3460 Birkerød  
Denmark  
www.eetgroup.com



Declare that the product:

**MAXIMUM MDA-110 Yacht and Caravan Antenna**  
(item 18751),



Is in conformity with:

RoHS 2005/95/CE

Electromagnetic Compatibility (EMC) Directive  
2004/108/EC

Standards:

EN 55013: 2001/A1:2003 / A2:2006

EN 61000-3-2: 2006 / A2:2009

EN 61000-3-3: 2008

EN 55020: 2007+A11:2011

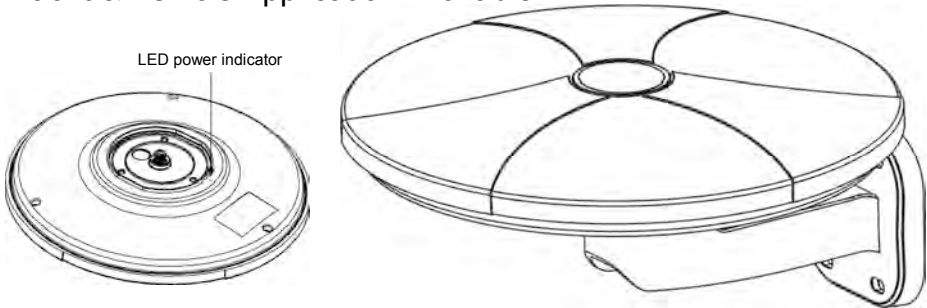
IEC 61000-4-2:2008

IEC 61000-4-4:2012

# HD Mobile Digital Antenna

MODEL: MDA-110

**Omni-Directional**  
Yacht & Vehicle Application Available



Thank you for your purchase of this MDA-110 Digital Antenna. Before your installation, please read this manual carefully and keep this manual for further information.

## INTRODUCTION

MDA-110 is special designed for the reception of digital terrestrial broadcasting. The omni-directional signal reception capability provides the convenience for users to install the antenna. With state-of-the-art low noise amplifier technology and circuitry, MDA-110 can provide better reception of HD signal.

With UV protected housing and water-proof sealing, MDA-110 digital antenna is the ideal outdoor antenna for digital terrestrial TV broadcasting reception. Yacht, vehicle, and outdoor pole mounting applications are provided to apply various usages.

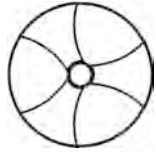
### Feature:

- Compact and Stylish design
- Omni-directional signal reception
- Surface-, wall- and pole-mounted installation
- UHF 470~790MHz
- VHF 47~230MHz
- Amplifier Gain UHF: 16±4dB; VHF: 20±3dB
- Support Yacht and Vehicle Digital TV installation
- AC 230V power adaptor powering supported
- Super low noise ( $\leq 2.5\text{dB}$ ) amplifier technology (\*with power inserter <4dB)
- Water-proof and UV resistant housing
- Red LED-light for indication of power ON/OFF

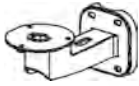
## PACKAGE CONTENT

Please check the content before your installation.

1. MDA-110 main unit
2. Pole/wall mount fixing base
3. Surface mount fixing base
4. Antenna Base
5. Power adaptor
6. Power insert with 3 M cable
7. Pole mounting kits (U-type screw × 2, butterfly-type screw cap × 4)
8. Coaxial cable of 3 M
9. Instruction Manual



Main Unit



Pole/wall Mount  
Fixing Base



Surface Mount  
Fixing Base



Antenna Base



Power Adaptor



Power Inserter



Pole Mounting  
Kits



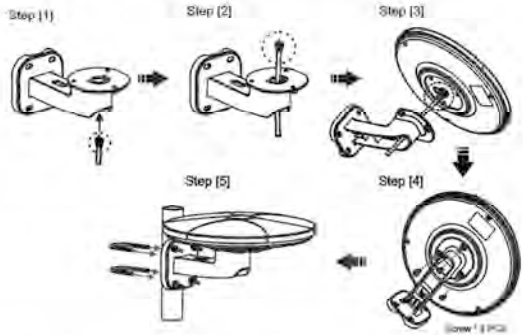
Coaxial Cable  
Kits

## INSTALLATION

### Antenna Placement:

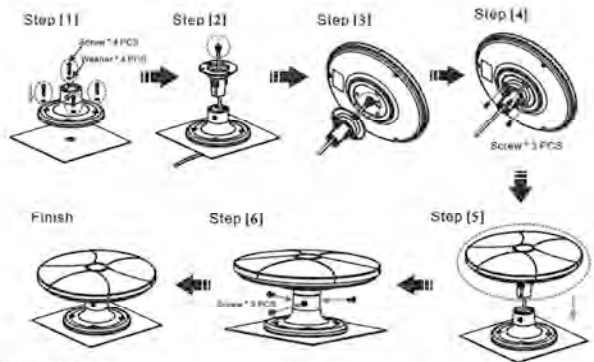
#### Pole Mounted Application

- (1) Take out coaxial cable and pole mounting fixing base.
- (2) Take the coaxial cable through the fixing base.
- (3) Connect coaxial to the antenna main unit.
- (4) Fix the fixing base on the main unit with screws.
- (5) Use U-type screws & 4 butterfly type screws nuts to fix the base on the pole.



#### Vehicle (Caravan) Application

- (1) Place the fixing base with screws and washers on the surface (caravan roof, boat deck, etc.).
- (2) Take out the coaxial cable through the hole in roof etc., through fixing base and antenna base.
- (3) Connect coaxial cable to antenna main unit.
- (4) Fix the antenna base on the main unit.
- (5) Place the main unit on the fixing base.
- (6) Fix the screws and washers (3 sets) on the fixing base and main unit.
- (7) Finish installation.

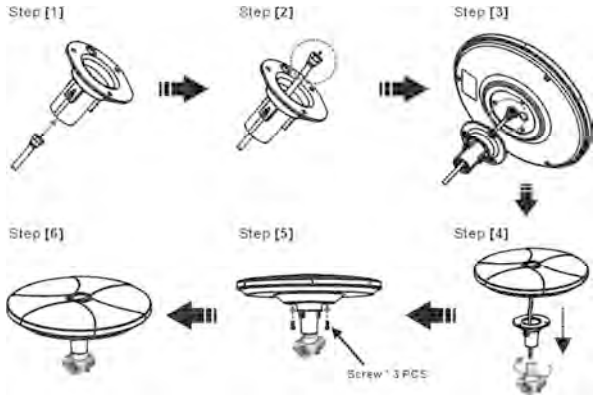


ⓘ Please note: Please make sure the antenna is fixed to the caravan or boat with a strong and reliable way to ensure its performance and safety.

ⓘ Tip: Use Sealant to prevent moisture from the caravan (boat) if needed.

**Yacht Application**

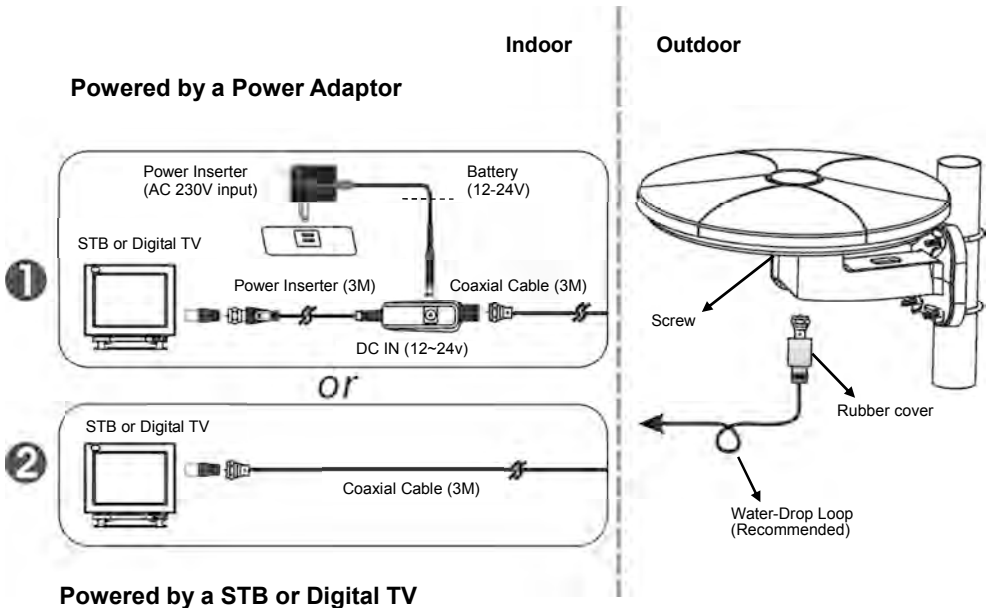
- (1) Take out the coaxial cable and antenna base.
- (2) Take the coaxial cable through the antenna base.
- (3) Connect coaxial cable to the main unit
- (4) Fix the antenna base on the yacht kits (provided by yacht accessories suppliers).
- (5) Place the main unit on the antenna base and fix with screws (3 pcs).
- (6) Finish installation



- ✳ **Please note:** Yacht kits for the antenna may be varied, please check with local yacht accessories suppliers
- ✳ **Please note:** The size of thread of this antenna base is 1"-14UNC, please check with yacht accessories suppliers to find the compatible kits

**Antenna Connection:**

**Warning: Max. direct input is 5 V.**



**Note:** White "line"-marking on power adaptor cable is to indicate "+".

## ① Powering the Antenna by a Power Adaptor

- (1) Follow one of the antenna placement instructions above
- (2) Connect the other end of the coaxial cable to the power inserter.
- (3) Connect another end of the power inserter to your Set-Top-Box (or Digital TV set).
- (4) Take out the power adaptor, connect to the DC IN of the power inserter (the LED on the power inserter will indicate the power status), and then connect the other end of the power adaptor to a power outlet. **Please use the provided power adaptor only.**
- (5) Turn on the STB or TV, and check for the signal.

## ② Powering the Antenna by STB or Digital TV

- (1) Follow one of the antenna placement instructions above.
- (2) Connect the other end of coaxial cable to the STB or Digital TV directly.

### **Please note:**

- ✱ *Please make sure the connected STB (or TV) can support DC 5V powering function through coaxial cable to antenna. Otherwise, using power adaptor and power inserter for powering.*
- ✱ *All the connection must be fixed, and it is strongly recommended that you should have a water-drop loop at the end of the cable.*
- ✱ *After you complete the installation, you can use your Set Top Box to check the signal strength and quality. If the quality is not good enough to have good pictures, you can move the antenna to another location to get the better reception, and then fix it.*

## NOTICE

For the best reception, please check the following conditions:

1. Keep away from sources of interference: keep away from those large power consumption devices such as air conditioner, elevator, hair dryer and microwave oven...etc.
2. Installed as high as possible: In the case of digital terrestrial reception, if there are some interruptions between the antenna and transmission tower, it will cause the signal loss temporary. So installed the antenna as high as possible to avoid the interruptions.
3. When install this antenna to the exterior of a vehicle or yacht, please make sure the antenna is fixed appropriately. **Max. windspeed: 130 KMH.**

## TROUBLE SHOOTING

1. If you cannot get the digital programs as you expect, please check the following conditions:
  - a. Check the connection. Make sure all the connection is correct.
  - b. Check the antenna powering function of your STB or DTV. MDA-110 is an active antenna (amplifier built-in), so you will need to turn on the power supply function for the antenna. (Please refer to the operational manual of your STB or DTV.)
  - c. When apply the antenna for any applications, please make sure you use the power inserter and power adaptor (included) for antenna powering. Please check the installation illustration as above for correct antenna powering connection.
2. Adjust the position of the antenna to find the best signal reception.

